



The Cowtown Cutter

Fort Worth Gem and Mineral Club Newsletter

Inside this Issue:

Program	1
Field Trips	2
Events	2
Birthdays	3
Map for Picnic	3
Minutes	4
President's Report	5
Committee Positions	6
Club Info	6

The newsletter is published monthly before each meeting. Send articles, editorial corrections and announcements by the Second Tuesday of each month: October 16th is the deadline for the October Newsletter.

Send to:
fwgmc.editor@gmail.com

Special Announcements:

Club Annual Picnic: October 21st
Gate will be open at 11:00 a.m. Lunch at 1:00 pm

Map on page 3

Program for Next Meeting Tuesday, Sept. 25, 2012:

The Adventures of Collecting Meteorites in Antarctica

Dr. Mayne is the Curator of the Monnig Meteorite Collection at TCU. She had the marvelous and exceptional privilege to participate on a several week excursion to Antarctica - complete with camping in a tent on the snow/ice for several days with the objective of collecting meteorites. The collecting was very good!

Due to certain circumstances our speaker was not able to attend the August meeting but will be giving her talk this month. She, her husband and baby will join us for the Pot Luck before the program. The program will be first on the meeting agenda so PLEASE BE PROMPT IN COMING SO THAT YOU DON'T MISS HER TALK. If you have any specimens that you wish identified as meteorites bring them along.

Please be free to invite friends that you think will be interested.

Potluck begins 7:00 pm. Bring your favorite dish!

Program begins at 7:30 pm

Field Trip:

Field Trip to Waco Lake Research Area

September 22nd, 2012 10:00 AM

This area is a borrow pit used in the construction of the Waco Lake dam. There are numerous, usually small, marine fossils and teeth. The pit has a small lake in the bottom and can sometimes be quite muddy. Digging is not permitted but there are plenty of finds on the surface. Kids and other club members are welcome. There are stairs most of the way down into the pit so access is easy. Bring some zip-locks, knee pads, gloves, water, sunscreen and lunch. The field trip will go on rain or shine.

Let's meet at 10:00 AM at the Research Area parking lot. The approximate address is 7601 Steinbeck Bend Dr, Waco TX, 76708; that is about a quarter mile west of Airport Rd. It is inside a low pipe fence a little past a large white commercial building, and it is the last driveway on the left on Steinbeck Bend Dr. There is a small sign by the gate.

When we leave we can visit a great mammoth excavation nearby. The Waco Mammoth Site is open to the public until 5:00 PM on Saturday. It is located at 6220 Steinbeck Bend Dr. Admission is \$7.00.

Please call, text, or email me if you plan to go.
Schuyler Bullock (682) 365-0517
sbbbr@cirranet.net
<http://www.wacomammoth.org/story.html>

Local Events:

Dallas Gem & Mineral Society's 55th Annual Show

September 29th & 30th 2012
Saturday from 10 a.m. to 6 p.m. and Sunday from 10am to 5pm.
1800 Rodeo Drive, Mesquite, Tx 75149. 1635 at Military Parkway (Exit 4).
http://www.dallasgemandmineral.org/gem_and_mineral_show.dwt

Arlington Gem & Mineral Show

October 6-7 2012
Saturday 10:00 a.m. - 6:00 p.m.
Sunday 10:00 a.m. - 5:00 p.m.
1010 N. Collins, Arlington, Tx.
(Behind Walgreens)
<http://www.agemclub.org/events.php>

LMRA Rock Fest

October 13-14, 2012
Saturday 10:00 a.m. - 6:00 p.m.; Sunday 10:00 a.m. - 6:00 p.m.
3400 Bryant Irvin Road, Fort Worth, Texas (on the scenic Trinity River)
Additional Info: Lockheed Martin Recreation Association Show. Also the annual Model Railroader's Show and Pottery in the Park. We will be on the lawn with jewelry, home decor, photos and lapidary rough.

Brookhaven (North Texas) Earth Science Fair

October 20-21 2012
Saturday 10:00 a.m. to 5:00 p.m.
Sunday 10:00 a.m. to 5:00 p.m.
Ellison Miles Geotechnology Institute
Brookhaven College, Building H; 3939 Valley View Lane; Farmers Branch, TX 75244. Free admission, parking, rock climbing wall, popcorn, and cotton candy!

Fossilmania

October 26-28 2012
Friday - October 26: 8:00 a.m. to 6:00 p.m.;
Saturday - October 27: 9:00 a.m. to 6:00 p.m.;
Sunday - October 28: 9:00 a.m. to Noon
Somervell County Expo Center; 202 Gibbs Boulevard, Glen Rose, TX; North side of Highway 67 at Gibbs Boulevard, Glen Rose, Texas.
Presented by the Dallas Paleontological Society. Admission is free. Free educational programs on Friday and Saturday. Free fossils for all kids. Free fossil identification. Hourly door prizes on Saturday. Fossil auction on Saturday night at 7:30. Tickets for great raffle prizes available at the show Friday and Saturday. Drawing at auction. Need not be present to win.
<http://www.austinpaleo.org/fossilmania.html>



Annual Picnic:

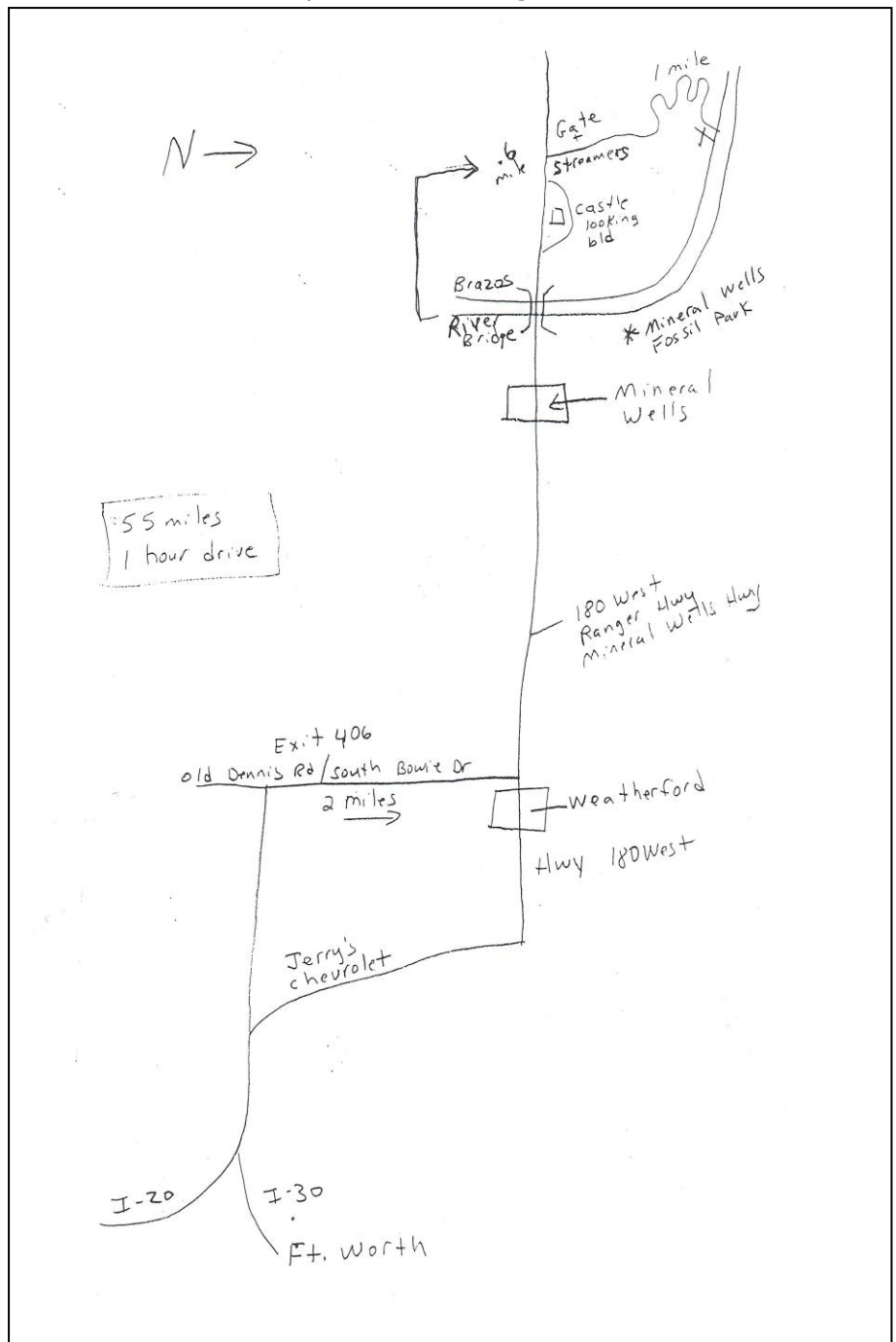
September:

- 1 - Keith Burnam
- 11 - Belinda Woodruff
- 13 - Josh Phillips
Rhonda Davis
- 19 - Bob Staglik
- 25 - Faye Stansbury
- 28 - Rachel Paris

October:

- 10 - Debbie Kersh
- 27 - Steve Hilliard
Hope Porter
Steve Street

Fall is in the air and it is time for the annual club picnic. Thanks to friends of David and Linda Kessler, we are returning to our favorite spot on the Brazos. Bring your lawn chair, buckets or bags for the goodies you find, water, sunscreen and hunting skills. This is a surface hunt; arrow heads, petrified wood, assorted fossils, and pretty rocks have been found in the past. Plan to bring a side dish to go with hamburgers and hot dogs. Gate opens at 11:00 am; Lunch will be at 1:00 pm. More details will be emailed out after the September meeting.



Minutes from Aug 28th

President Martha Phillips called the business meeting to order at 7:35 p.m.

It was with great sadness she announced the passing of Elsie Kennedy.

Sunshine: A collection will be taken up for the Kennedy family. A cash or check donation would be welcome; checks should be made to George Kennedy.

Show: Mary called Will Rogers about contracts. They will be sent out soon. We will have a new event coordinator next year. Mary will continue to be our Show chairman.

Minutes: Mary made a motion to approve minutes, Susan seconded, carried.

New Business: Repairs. We need to prioritize. A/C repair is done, foundation will be next.

Thanks go out to Susan and Janice for all the work on saws and equipment. Lots of hard work on their part and the club members thank them very much. There is a signup sheet for cabbng classes on front desk. Remember a safety class must be completed before use of equipment.

Brazos river picnic is coming up soon we need to decide on a date.

Field Trips: Sept. 22nd there will be a trip to Waco pit. Mammoth site can be visited afterwards.

We are unable to man a table at the International Gem show this year. Janice will talk to LMRA to see if we can put a display board on their table.

Martha made an announcement of the things she learned at the South Central Federation meeting held in Jasper TX. One thing is they are trying to promote interest in gems by asking commemorative stamp decision makers to put gemstones on stamps. Our president wrote and mailed a letter of support.

It was announced that the President, Vice President and Treasurer all need to be on a signature card for the checking account. We will update that when new

officers are elected. Elections for Officers will be in October.

Janice will be Newsletter Editor. Submissions for newsletter need to be submitted 2 weeks before meeting.

Drawing: Red ticket- Talon, White ticket- Skylar Davis

Program: None given

Treasurer's Report: None given

Steve made a motion to reimburse Martha \$200.00 for gas and hotel fees, Janice seconded. Motion carried.

There will be revised membership applications to be filled out at the September meeting.

Silent Auction: \$47.29 was raised for Scholarship fund.

Meeting adjourned at 8:30 pm.

Respectfully submitted,
Hope Porter, Secretary

Next Meeting, September 25, 2012

Meeting at 7:30

Social time starts at 7:00

Address: 3545 Bryan Avenue

Fort Worth, Texas 76110

Bring a covered dish for the Pot Luck.

President's Report

Polished Rocks vs Natural Stone and the Similarity of Human Nature

I am inspired when I see how a raw stone changes and its beauty is magnified when it is polished. It somehow reminds me of the human nature we have inside of us. There are a lot of different rocks and minerals out there on our planet, some harder to appreciate than others, simply because of the way they may first appear. But all are unique and special. People are like that. Some just seem to shine & be smooth naturally, like a river rock, others need to be "mined" to come out of their hidden places.

What I am trying to say, is each of us has qualities to be appreciated. Each member of our club has something to offer the club. Participating and giving in little ways goes a long way in making our club a success. Donating for the door prize, repairing equipment, putting on a program, sharing skills and time in how to make something, sending e-mails & cards, contributing an article to the newsletter, bidding at auction, participating in the show, going on field trips and sharing knowledge to identify samples, are all examples of how we work together to shape the future of our club.

Won't you each give some thought to what you want our club to hold in the future?

Maybe you could volunteer to teach a program or simple class, just an hour investment of your time could stimulate & help motivate something for another member. Nothing is certain but change. Things are changing for our club in a direction that we all can have input into, if only we are willing.

We will have our club election in October. I will then need to notify the South Central Federation of Mineralogical Societies of our new officers. So far we have open slots for President and Secretary.

We have some very dedicated folks who graciously are willing to continue in their current spots: Schuyler will continue as Fieldtrip Coordinator,

Irene as Program Chairperson, Mary as Show Chairperson and Fran as Treasurer. In addition, Janice is Shop Foreman and Newsletter Editor and Susie is Membership Coordinator.

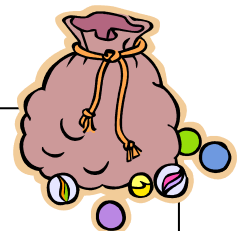
I would like to thank all of you for your support during the almost two years that I have been president. I have learned a lot about our organization and about myself. My family and I have grown immensely, especially my sons, but my daughter too. It was a joy to see them sharing their knowledge, gained mostly from you all, with the Cub Scouts this past summer. When you have witnessed a good thing and see it being passed on from younger people to even younger people, you know something special has been at work here.

From the bottom of my heart, thanks to all of you for what you have given me & my family -- growth opportunity with lessons about outdoor ancient life, geology, working together & the passionate sharing of knowledge.

-----Martha Phillips

Nothing's lost that Love remembers.
If something comes to life in others
Because of you,
Then you have made an
Approach to immortality.

-Norman Cousins



How to become a Rockhound:

1. Get a bag of marbles
2. Go collect rocks
3. For every rock you pick up, replace it with a marble.
4. When you have lost all your marbles, then you are a rockhound.

Committee Positions:

Martha Phillips - President

marthamirantiphillips@yahoo.com

817.306.1475

Schuyler Bullock – Field Trips Chair

sbbr@cirranet.org

682.365.0517

Hope Porter - Secretary

hopeporter5150@aol.com

817.495.2331

Mary Hilliard – Sunshine/Show Chair

samehil@embargmail.com

817.995.8351

Fran Loyd – Treasurer

P.O. Box 123975, Ft Worth, TX 76121

Susan Thielker - Vice President

ammonite_hunter@yahoo.com

817.247.8467

Irene Stemple – Programs Chair

nstemple@att.net

817.798.5241

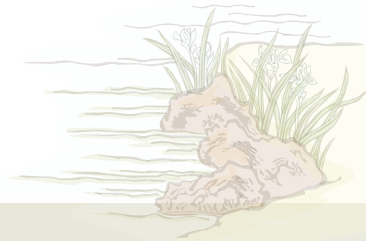
Stephanie Moran – Site Manager

Fwgmc.webmaster@gmail.com

817.449.8414

Janice Craddock – Newsletter Editor/Shop Foreman

fwgmc.editor@gmail.com



The Fort Worth Gem and Mineral Club was founded in 1950. It is also a member of the [American Federation of Mineralogical Societies](#) and the [South Central Federation of Mineralogical Societies](#).

PURPOSE: The purpose of this club is to promote the study of geology, mineralogy, and the lapidary arts. We also strive to stimulate the interest in the searching, and collecting, of minerals and fossils.

MEMBERSHIP: Membership shall be open to anyone interested in the purpose described above.

DUES: \$15.00 per person, per year. \$20.00 per family, per year.

MAILING ADDRESS: P.O. Box 123975, Fort Worth, Tx 76121

CLUB WEBSITE: www.fortworthgemandmineralclub.org